

Self - Shielded Flux Cored Wire For Hardfacing KJTUBO/G-474WFe

Standard

DIN EN 14700 (TFe 20 - 65 - GZ)

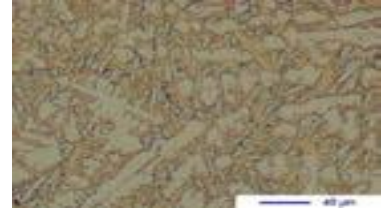
DIN 8555 (MF 21 - 65 - GZ)

Typical All – Welded Metal Analysis (weight %)

Steel – Matrix with Inserted Tungsten- Carbide (52-58%)

Typical Weld Metal Properties

Weld metal hardness	Matrix 65-67 HRC and tungsten carbide 2400 HV0.4
Machinability	Very hard (Grinding Only)
Microstructure	35% Tungsten carbides 30% Iron - Tungsten carbides 35% austenite + martensitic
Abrasive wear resistance	Excellent against minerals



Packing

Application	Gas-shielded
Diameter (mm)	1.60
Weight spool	13 - 15

Description

Contains tungsten carbide particles optimized in composition and size to provide the best strength and wear.

Suitable for Mining drilling rigs, concrete mixer blades, crusher rollers, wood chipper spouts and drilling mines and mixer blades.

Shielding gas: Ar + 20% CO₂ or 100% CO₂