

Self - Shielded Flux Cored Wire For Hardfacing KJTUBO - 455

Standard

DIN 8555 (MF 10 - 60 - GR)

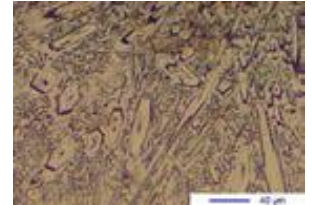
DIN EN 14700 (T Fe 15 - 60 - GC)

Typical All – Welded Metal Analysis (weight %)

Self - Shielded	C	Si	Mn	Cr	B
KJTUBO - 455	4.7 – 5.2	1.0 - 1.3	0.3– 0.6	27 - 30	+

Typical Weld Metal Properties

Weld metal hardness	58 – 61 HRC
Machinability	Very hard (Grinding Only)
Microstructure	Primary carbides and M7C3 eutectic carbides in an austenitic matrix
Abrasive wear resistance	Excellent against minerals



Packing

250Kgs drum or 15 / 25 Kgs spool, depending on wire size and customer's order

Application	Self-shielded
Diameter (mm)	1.60 – 2.80

Description

High Chromium alloy designed for resisting high stress grinding abrasion
Suitable for wear plate, pumps, mixers and feeder screws